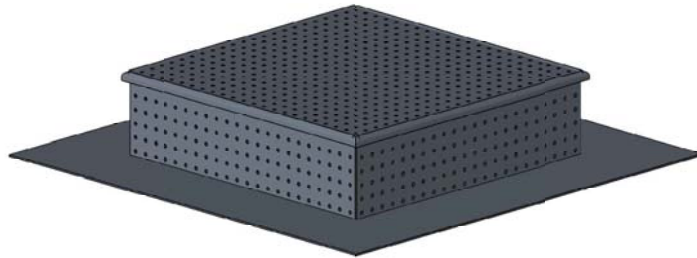


## Froet S/S GRB

**Installation Tips:**

The Froet GRB is made from perforated stainless steel with a solid 6" flange at the base. The top is provided solid or perforated. A heal proof aluminum grated top can also be provided. Box dimensions must be provided before manufacturing will begin. The GRB must sit on top of the drainage mat.



**Box Dimensions**

	W	L	H
A			
B			
C			
D			

**Project Options**

PT	Perforated top	ST	Solid Top
RT	Recessed top	GT	Aluminum Grate Top

Project name: \_\_\_\_\_  
 Contractor: \_\_\_\_\_  
 Gen Con: \_\_\_\_\_  
 Design Firm: \_\_\_\_\_

**Froet Industries LLC** 1741 Industrial Drive  
 Sterling Illinois 61081  
 ph. 815.626.7922 fx. 815.626.0702  
[www.froetindustries.com](http://www.froetindustries.com)

Specifications and dimensions subject to change without notice